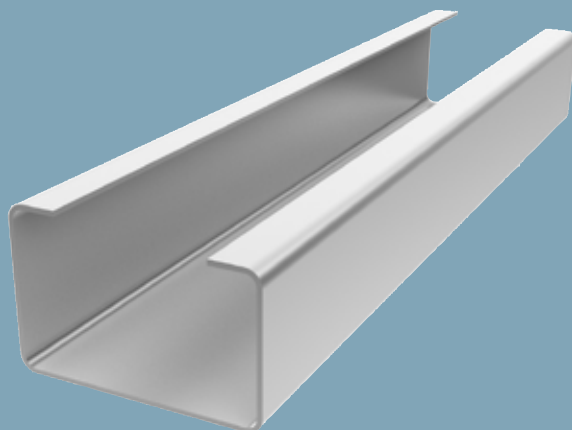


KR studs



KR casement studs

Studs for doors, high walls and bearing walls

Page: 1/1

03/2017

PRODUCT DATA

CHARACTERISTIC		VALUE	UNIT
Fire	Reaction to fire	A1	Incombustible
Strength	Yield point	250	N/mm ²
Surface	Zinc	275	g/m ²
Corrosion class		C2	
Measurements	Widths ± 0,5	45/70/95/120/145	mm
	Thickness	1.0	mm
	Length	± + 0 / - 3	
	Other - see drawing	± 1	mm

Areas of use

Studs with asymmetric flanges. Can be slotted into each other. For telescopic solutions for very high walls or for walls where a high degree of stability is required. To be used in buildings with plasterboard according to EN 520 or reprocessed products.

Profiles produced according to EN 14195.

Varianter/størrelser:

Stolpe FR 45/70/95/120/145 mm

PROFILE DATA

	t	h	A	iy	ly	Wy
Profile	mm	mm	mm ²	mm	mm ⁴	mm ³
KR45	1,0	45	134,3	19,2	4,96 x 10 ⁴	2,16 x 10 ³
KR70	1,0	70	157,3	29,0	13,28 x 10 ⁴	3,74 x 10 ³
KR95	1,0	95	182,3	38,2	26,54 x 10 ⁴	5,53 x 10 ³
KR120	1,0	120	127,0	57,3	41,70 x 10 ⁴	6,22 x 10 ³
KR145	1,0	145	218,9	56,1	68,88 x 10 ⁴	9,72 x 10 ³

Steel quality: S250GD+Z275

