

## THE PFT MACHINE PROGRAMME FOR THERMAL INSULATION COMPOSITE SYSTEM



### The universal (closed system) Mixing pump PFT G 4

- continuous mixing of the adhesive
- universally applicable for all interior and exterior plasters
- as system: spraying of the adhesive and the reinforcement
- silo connection optionally



### The flexible system (open system) Horizontal mixer PFT HM 24 with Conveying pump PFT N 2

- continuous mixing of the adhesive
- separation of mixer and pump
- high flexibility thanks to separate operation
- high conveying capacity
- high conveying distances at constant material flow
- silo connection optionally



### 230 V power for renovation Mixing pump PFT RITMO

- machine technology with 230 V alternating power offers continuous mixing and spraying of the adhesive
- powerful in the field of renovation
- low weight, easy to transport for small building sites
- mineral and pasty materials can be applied



### Thin coating expert with 230 V Conveying pump PFT SWING Airless sprayer PFT SAMBA

- grainy, pre-mixed materials are sprayed air-supported by the PFT SWING
- airless-technology of the SAMBA-family sprays almost all primers, colours and smoothing colours
- structuring thanks to machine technology



### Customised on to the wall Hot-wire cutting device PFT CUTMASTER and PFT MINICUT

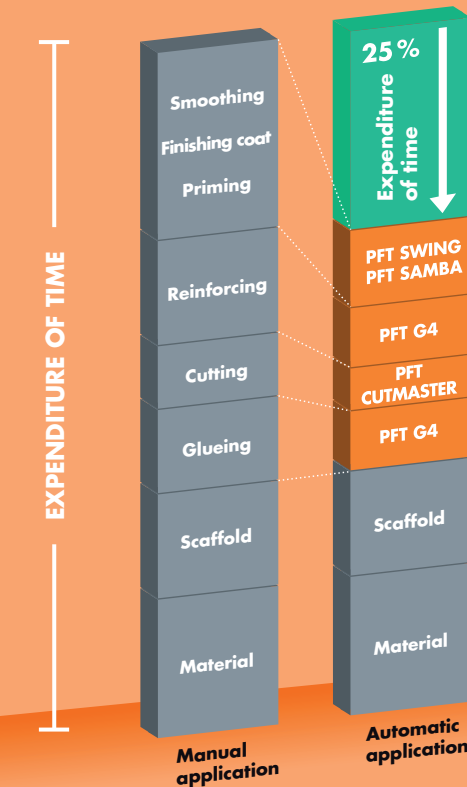
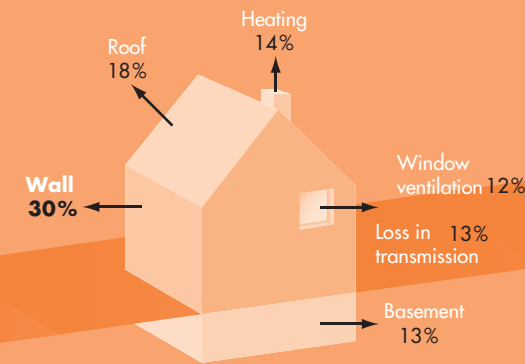
- millimetre accurate cutting of the insulation board
- little cutting scrap and few polystyrene waste
- can be mounted on the scaffold directly on the building site
- clean solution



### Pressurised working Air compressor PFT LK 604 and PFT LK 402

- two oil-free pressure air connections
- fully automatical operation via pressure switch on/off
- 230 V-version – PFT LK 402
- 400 V-version – PFT LK 604

Savings in heat energy of up to 30 % can be achieved by reasonable exterior insulation. No other measure offers this potential!



#### Advantages at a glance :

- Savings of 25% compared to manual application and, thus, cost savings
- easy material application and, hence, saving of power

PFT – THE FLOW OF PRODUCTIVITY



All rights and technical changes reserved. We provide guarantee as far as faultless and proper finishing of our machines is concerned. Figures given in relation to output, equipment and performance are based on experience and can vary in case of changing circumstances. Furthermore, the instructions of the material/mortar manufacturers must be observed. Alterations, reprints and photomechanical reproductions, even in extracts, require the permission of Knauf PFT GmbH & Co. KG.

PFT Thermal insulation-GB/1.5M/08.09/ROT



**Knauf PFT**  
Technical Hotline:  
+ 49 9323 31-1818

- Phone + 49 9323 31-760
- Fax + 49 9323 31-770

► [info@pft-iphofen.de](mailto:info@pft-iphofen.de)

► [www.pft.eu](http://www.pft.eu)

Thermal insulation composite system

PFT – THE FLOW OF PRODUCTIVITY



## PFT MACHINE TECHNOLOGY FOR THERMAL INSULATION

The thermal insulation composite system –  
easier, faster, more economic  
for new buildings and renovation



Knauf PFT GmbH & Co. KG  
P.O. Box 60  
97343 Iphofen  
Einersheimer Str. 53  
97346 Iphofen  
Germany

Knauf Gips  
Dry construction- and Floor-Systems

Knauf Gips/Marmorit  
Plaster- and Facade-Systems

Knauf Dämmstoffe  
Polystyrene Insulating  
Material

Knauf AMF  
Ceiling Systems

Knauf Perlite  
AQUAPANEL® CementBoards, Perlit

Knauf Insulation  
Insulating Materials made of rockwool,  
glasswool and wood wool

Knauf Bauprodukte  
Expert solutions for home

Sakret Bausysteme  
Dry mortar for new buildings and renovation

Knauf Integral  
Gypsum Fibre Material for floor, wall  
and ceiling



# PFT – The right partner for the complete wall construction for thermal insulation.

It works like that:

## 1 UNDERGROUND



## 2 SPRAYING OF GLUEING MORTAR

2.1



2.2



**2.1** Automatic spraying of glue with mixing pump and spraying gun directly on to the wall\*.

**2.2** Alternative: Automatic spraying of glue with mixing pump and PFT ZARGOMAT pistol directly on to the insulation board.

## 3 CUTTING OF INSULATION BOARDS

3.1



3.2



**3.1** Easy cutting of the insulation boards. Clean, exact and fast – little cutting scrap and few polystyrene waste. Directly mountable on the scaffold.

**3.2** Can also cut upright or in any other angle.

## 4 SPRAYIGN OF REINFORCING ADHESIVE

4.1



**4.1** The reinforcing adhesive is equally sprayed on to the finished facade with the spraying gun for decorative plasters. This simplifies the embedding of the reinforcing mesh and, thus, the work-intensive smoothing is redundant.

## 5 EMBEDDING OF REINFORCING MESH

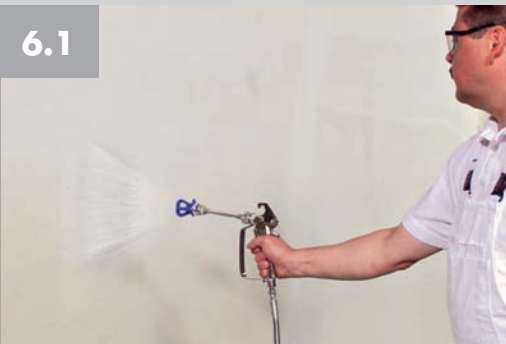
5.1



**5.1** The reinforcing mesh is completely embedded into the adhesive free of crinkles and surface near.

## 6 SPRAYING OF PRIMER

6.1



6.2



**6.1** Primer will be sprayed on the entire surface via the airless sprayer PFT SAMBA.

**6.2** Alternative: The primer can also be applied via a conveying pump such as PFT RITMO or PFT SWING and a colour pistol fed from inside.

## 7 SPRAYING OF FINISHING PLASTER

7.1



**7.1** Automatic application of the finishing plaster. Structuring by machine plus Swing-spraying gun.

## 8 SPRAYING OF SMOOTHING COLOUR

8.1

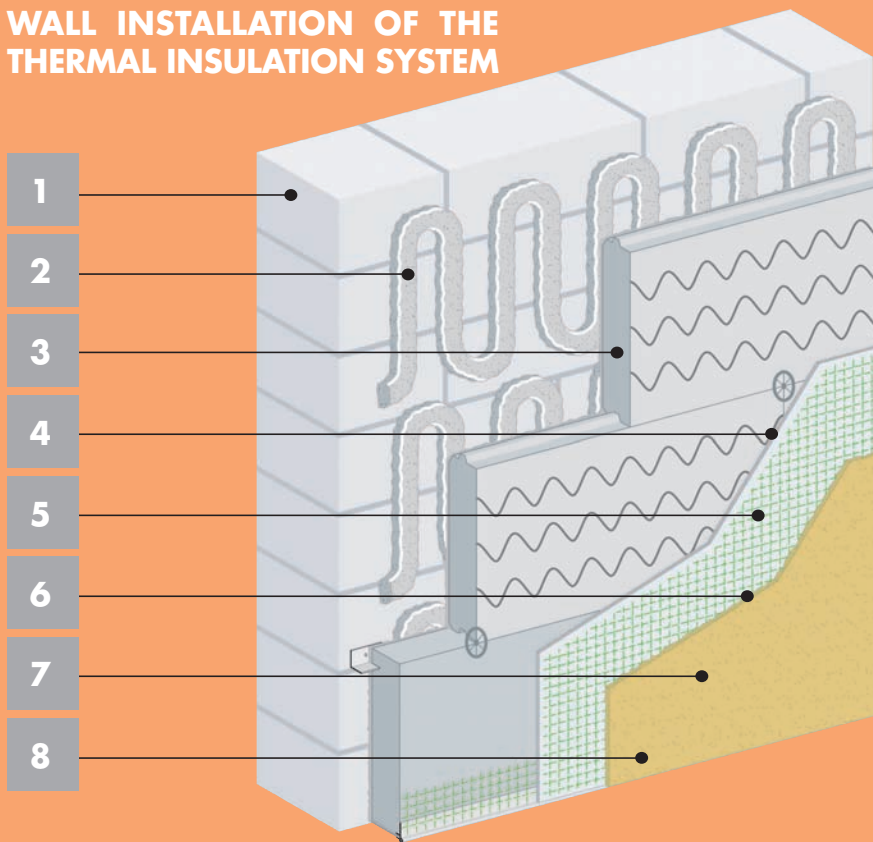


**8.1** The clean, fog-reduced spraying with the airless sprayer PFT SAMBA completes the system for the construction of the thermal insulation facade.

## EASIER, FASTER AND MORE ECONOMIC

Automatic glueing, reinforcing, cutting and spraying. Thanks to the modular PFT machine technology you can simplify, accelerate and rationalise application processes when you install thermal insulation systems and, thus, you can save time and money.

## WALL INSTALLATION OF THE THERMAL INSULATION SYSTEM



### MACHINE RECOMMENDATION:



– Mixing pump  
**PFT RITMO**  
or



– Mixing pump  
**PFT G4**  
or



– Machine combination  
**PFT HM 24/PFT N 2**



– Hot-wire cutting device  
**PFT CUTMASTER**  
or



– Hot cutting device  
**PFT MINICUT**



– Mixing pump  
**PFT RITMO** +  
Air compressor **PFT LK 402**  
or



– Mixing pump  
**PFT G4** +  
Air compressor  
**PFT LK 402/PFT LK 604**  
or



– Machine combination  
**PFT HM 24/PFT N 2** +  
Air compressor  
**PFT LK 402/PFT LK 604**



– Mixing pump  
**PFT RITMO** +  
Air compressor **PFT LK 402**  
or



– Mixing pump  
**PFT G4** +  
Air compressor  
**PFT LK 402/PFT LK 604**  
or



– Machine combination  
**PFT HM 24/PFT N 2** +  
Air compressor  
**PFT LK 402/PFT LK 604**



– Mixing pump  
**PFT RITMO**  
or



– Conveying pump  
**PFT SWING**  
or



– Airless sprayer  
**PFT SAMBA**



– Mixing pump  
**PFT RITMO**  
or



– Conveying pump  
**PFT SWING** +  
Air compressor **PFT LK 402**



– Airless sprayer  
**PFT SAMBA**

\*the directives resp. recommendations of the material producer are applicable