



# **Knauf GIFAfloor DB green raised floor**

## Assembly instruction

# Content

<b>Introduction</b>	
<b>Notes</b>	3
Instructions for use	3
Legal notes	3
Qualified personnel	3
Intended use of products and systems	3
<b>System components and tools</b>	4
System components	4
Tools	5
<b>Assembly</b>	6
Substrate and primer	6
Measure the room and create a laying plan	6
Fixing GIFAfloor edge insulation strips	7
Prepare position of the GIFAfloor pedestal	7
Set up GIFAfloor pedestals	7
Installation of first GIFAfloor DB green raised access floor element in the perimeter area	8
Installation of further GIFAfloor DB green raised floor elements	9
<b>Revisioning</b>	10
Revision of the DB green raised floor	10
<b>Optional assembly grid rods</b>	12
Assembly GIFAfloor grid rods	12

## Instructions for use

### Notes on the document

This assembly instruction is an aid for the assembly of prefabricated products. It contains information on the scope of delivery, proper assembly and, if necessary, testing and adjustment of the product. Unless otherwise stated, the information and specifications, construction variants, design details and products listed are based on the applicability certificates (e.g. general building authority test certificates abP) and standards valid at the time of preparation. In addition, building physics (fire protection and sound insulation), constructional and static requirements are taken into account where necessary.

### References to further documents

- [F185.de Knauf GIFAfloor DB green raised access floor](#)
- [F18.de Knauf GIFAfloor hollow floor](#)
- [F19.de Knauf GIFAfloor self supporting systems](#)
- [F431.de Knauf Screed Primer](#)
- [K436e.de GIFAfloor Edge insulation strip MW](#)
- [K844b.de GIFAfloor Pedestals](#)
- [K844c.de GIFAfloor Pedestal Adhesive EC 1](#)
- [K844d.de GIFAfloor Thread Sealer EC 1](#)
- [K847.de GIFAfloor DB green elements](#)

## Legal notes

### Safety information

This assembly instruction contains information that must be observed for personal safety and to avoid damage to property.

#### Caution

Indicates a potentially harmful situation. If this is not avoided, it may endanger the safety of the worker or users or cause damage to the product or the environment.

#### Note

Provides useful information on the product or system.

## Qualified personnel

The product/system associated with these instructions may only be handled by personnel qualified for the respective task. The safety and warning instructions must be observed or complied with. Qualified personnel are, due to their training and experience, able to recognise risks when handling this product or system and to avoid possible hazards.

## Intended use of products and systems

Please observe the following:

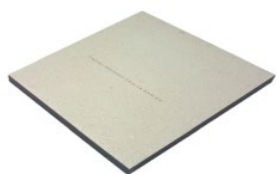
#### Caution

Knauf systems may only be used for the application cases as stated in the Knauf documentation. In case third-party products or components are used, they must be recommended or approved by Knauf. Flawless application of products/systems assumes proper transport, storage, assembly, installation, and maintenance.

### System components

Image	Material	Mat.-No.	Packaging unit	Consumption
1	GIFAfloor DB green elements	See price list	See price list	—
2	Knauf screed primer	5355	10 kg-bucket	Approx. 200 g/m <sup>2</sup>
3	GIFAfloor edge insulation strip MW	109147	100 pcs./box	As required
4	GIFAfloor grid rod light	74336	Piece	Approx. 5.7 pcs/m <sup>2</sup>
4	GIFAfloor grid rod heavy	74337	Piece	Approx. 5.7 pcs/m <sup>2</sup>
5	GIFAfloor pedestals M16S (head Ø 90 mm, base Ø 98 mm)	See price list	See price list	Approx. 4.2 pcs/m <sup>2</sup>
6	GIFAfloor pedestals M16ST (head Ø 90 mm, base Ø 98 mm)	See price list	See price list	Approx. 4.2 pcs/m <sup>2</sup>
6	GIFAfloor pedestals M20ST (head Ø 90 mm, base Ø 98 mm; pipe 24 x 2 mm)	See price list	See price list	Approx. 4.2 pcs/m <sup>2</sup>
7	GIFAfloor gasket for M16/M20 with 4 naps	30098	150 pcs./box	Approx. 4.2 pcs/m <sup>2</sup>
8	GIFAfloor pedestal adhesive EC 1	260231	600 ml foil tube bag	Approx. 15 ml/pedestal
9	GIFAfloor thread sealer EC 1	776410	500 g bottle	Approx. 1 bottle/250 pedestals
10	GIFAfloor PGR insulation pads	44135	See price list	As required

1



2



3



4



5



6



7



8



9



10



## Tools

Image	Required tools	Mat.-No.	Packaging unit	Consumption
11	Knauf adhesive gun	4657	Piece	As required
12	GIFAtool Diamond (Diamond tipped saw blade 160 x 2,2 / 1,6 x 20)	186326	Piece	Tool life approx. 500 m <sup>2</sup>
—	Rotary laser or level	—	Piece	As required
—	Raised floor spirit level	—	Piece	As required
13	Vacuum cleaner	—	Piece	As required
14	Hand-held circular saw with tracks	—	Piece	As required
—	Pendulum stroke jigsaw	—	Piece	As required
—	Angles	—	Piece	As required
—	Folding rule	—	Piece	As required
—	Paint roller	—	Piece	As required
—	Vacuum lifter	—	Piece	As required

14



15



16



17



### Substrate and primer

#### Caution

The substrate must have the minimum load-bearing capacity for the load transfer via the raised floor pedestals. The substrate must be solid, dry, and free of separating agents such as bitumen, oils or paints.

1. Sweep and vacuum the unfinished floor thoroughly.

Bild 1: Clean the raw floor



2. Prime the unfinished floor surface, e.g. with Knauf Estrichgrund.

Bild 2: Prime the raw floor



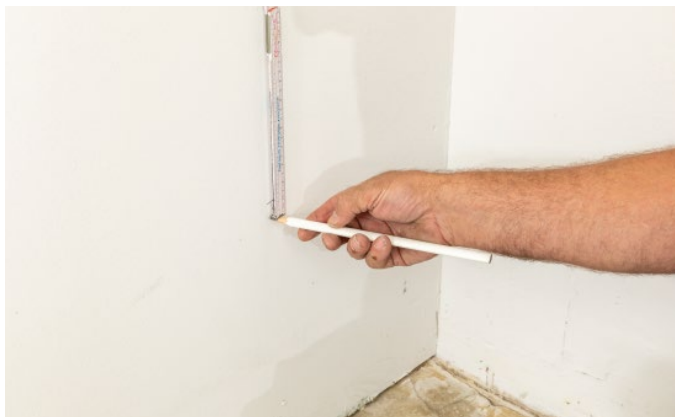
#### Note

Mixing ratio of Knauf Estrichgrund with water is 1:1.

### Check and determine installation height

1. Checking and determining the heights.

Bild 3: Check and set reference points



### Measure the room and create a laying plan

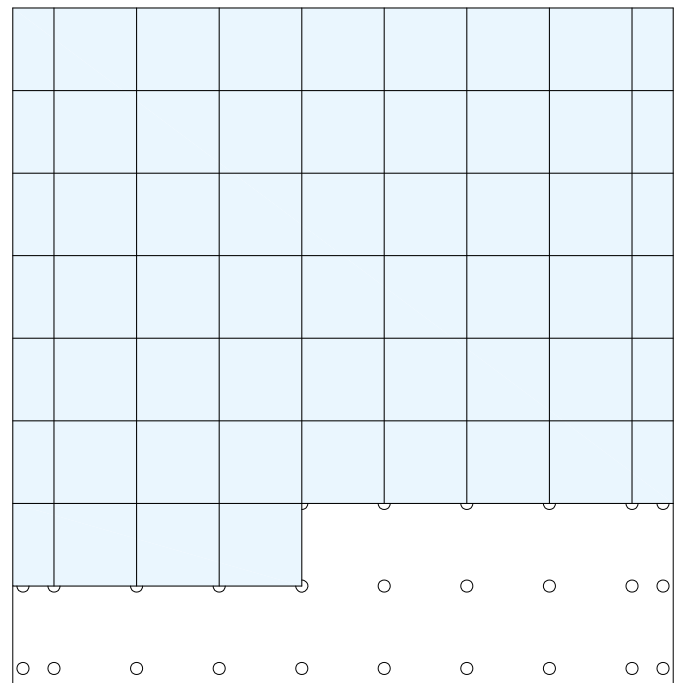
1. Measure the room with a folding rule.
2. Check the room for squareness with an angle.

Bild 4: Checking perpendicularity



3. If necessary, preparation of installation plan.

Bild 5: Installation plan with wall connection



#### Note

Edge length of the cut-off panels at least 200 mm.

#### Note

Maximum square area without expansion joint 15 m x 15 m.



#### Fixing GIFAfloor edge insulation strips

1. Fix GIFAfloor edge insulation strips with staples or Knauf Uniflott.

Bild 6: Wall fixing GIFAfloor edge insulation strips



2. Fix GIFAfloor edge insulation strips to the wall all around.

#### Note

Pay attention to the position of the staples. It is best to staple underneath the raised floor elements to avoid sound bridges.

Bild 7: Fasten GIFAfloor edge insulation strip circumferential to wall



#### Note

Edge insulation strips must protrude above the upper edge of the finished floor and be fixed below the GIFAfloor DB green elements.

#### Note

Installation of GIFAfloor edge insulation strips MW optionally possible with Knauf Uniflott.

#### Prepare position of the GIFAfloor pedestal

1. Mark the position of the first GIFAfloor pedestals on the subfloor and apply the GIFAfloor gaskets. For installation in the edge area, use GIFAfloor gaskets with two naps.

Bild 8: Mark the line for the first row of pedestals



#### Set up GIFAfloor pedestals

1. Apply a sufficient quantity of GIFAfloor pedestal adhesive to the underside of the pedestal base.

Bild 9: Apply GIFAfloor pedestal adhesive



2. Align the first GIFAfloor pedestals vertically and set them to the reference height.
3. Mount additional GIFAfloor pedestals to hold the GIFAfloor DB green elements and level them to height using a raised floor spirit level or laser.

### Installation of first GIFAfloor DB green raised access floor element in the perimeter area

1. Measurement of the wall connection element.

Bild 10: Measuring the wall connection element



2. Cut the wall connection element with a hand-held circular saw and GIFAtool Diamond saw blade.

Bild 11: Cut wall connection element



3. Prepare GIFAfloor pedestals for the wall connection area. For this purpose, use GIFAfloor support plates with two naps.

Bild 12: Set up the raised floor pedestals and mount them in the wall connection area.



4. Install the cut-to-size GIFAfloor access floor element in the wall connection area and secure it against height adjustment with GIFAfloor thread sealer EC 1.

Bild 13: Set up reference height



5. Install GIFAfloor pedestals in the wall connection area page 7) with the sawn edge towards the wall.

Bild 14: Installing the access floor element in the wall connection area



#### Note

Align the access floor panels according to the panel imprint (top of panel) to achieve the most even installation.



#### Installation of further GIFAfloor DB green raised floor elements

1. Glue GIFAfloor pedestals in position.

Bild 15: Positioning additional pedestals



2. Adjust the height of the GIFAfloor pedestals and check with a spirit level or laser.  
Place additional GIFAfloor DB green raised floor elements on installed pedestals.

Bild 16: Installing the first row of Knauf GIFAfloor DB green panels



3. Mount the next row of panels in the same way.

Bild 17: Levelling the raised floor elements



4. Level and secure additional GIFAfloor DB green raised floor elements in both directions using a raised floor spirit level. Then secure against height adjustment with GIFAfloor support lock EC 1 „Fixing GIFAfloor edge insulation strips“ page 7

Bild 18: Installation of additional raised floor elements



#### Note

Place the inner access floor panels of the second and following row on the 3 upright pedestals. Slide the fourth pedestal under the raised floor element and adjust the height. However, this does not replace checking the height.

### Revision of the DB green raised floor

1. Lift the GIFAfloor DB green raised access floor element with a vacuum lifting pad.

Bild 19: Lifting with vacuum lifting pad



2. Place the GIFAfloor DB green access floor element in a safe place.

Bild 20: Battery vacuum lifting pad with double raised floor element



3. After revision, place GIFAfloor DB green raised access floor elements back in position with vacuum lifting pad.

Bild 21: Re-seal raised floor with raised floor element



#### Note

The use of a (battery) vacuum lifting pad is recommended, since it minimises the risk of damage to the access floor elements during revision.



### Assembly GIFAfloor grid rods

1. Set up the pedestals at the intended grid spacing.

Bild 22: Assembly light grid rod



2. Mounts GIFAfloor grid rods for horizontal bracing

Bild 23: Assembly light grid rod



Bild 24: Assembly heavy grid rod



<b>Note</b>	For pedestal heights from approx. 500 mm, use light grid rods for horizontal bracing and from approx. 800 mm pedestal height, use heavy grid rods.
<b>Note</b>	Install other accessories that are not part of the system according to the manufacturer's instructions, e.g. electrants.
<b>Caution</b>	The installation of accessories significantly reduces the working load of the GIFAfloor DB green elements and is not part of the Knauf GIFAfloor DB green raised floor system.



Scan QR Code to get to the YouTube video instruction.



The App Knauf Infothek provides all the current information and documents from Knauf Gips KG at any time and in every location in a clear and comfortable way.

[knauf.de/infothek](https://knauf.de/infothek)

**Knauf Direct**  
Technical Advisory Service:

► [knauf-direkt@knauf.com](mailto:knauf-direkt@knauf.com)

► [www.knauf-integral.de](http://www.knauf-integral.de)

**Knauf Integral KG** Am Bahnhof 16, 74589 Satteldorf, Germany

All technical changes reserved. Only the current printed instructions are valid. The stated information represents current state-of-the-art Knauf technology. The entire state of approved engineering rules, appropriate standards, guidelines, and rules of craftsmanship are not included herewith. These and all application instructions have to be adhered to separately by the installer. Our warranty is expressly limited to our products in flawless condition. All application quantities and delivery amounts are based on empirical data that are not easily transferable to other deviating areas.

All rights reserved. All amendments, reprints and photocopies, including those of excerpts, require our expressed permission.