



PROFESSIONAL PFT MACHINE TECHNOLOGY

for painters and plasterers





Varnish

Varnish and dispersions

Professional specialist companies process coatings, dispersions and silicate paints, starting from a certain size of the construction surface, exclusively with the latest airless-technology. With the airless spraying guns of the PFT SAMBA product line, varnish and dispersions can be applied in particular efficiently and sprayed on walls and surfaces, producing low-mist.

Different spraying nozzles and equipment packages enable a flexible use for all surface coating applications.

Due to its exclusive industrial technology, the airless spraying systems of the PFT SAMBA product line combine flexibility, perfection in processing and easy handling.

Every constructions site thus can be finished time saving in comparison to the traditional application with paintbrush and roll. Depending on your field of application, you can choose from our airless programme the machine, that matches your needs perfectly.





Advantages at a glance:

- ▶ fast and efficient working
- ▶ machine technology in system
- ▶ airless programme tailored to your field of application
- ▶ different paints with flexible machine technology



PFT SAMBA XL

The airless spraying machine leaves nothing to be desired. Most suitable for large projects with dispersion-based spatula, façade paint, silicate paint, dispersion paint, corrosion protection, fire protection and much more.



PFT SAMBA L

This machine works nearly all kinds of construction paintings. From house paintings to large construction sites, both inside and outside.



PFT SAMBA S

The economic alternative in airless technology. Every construction site thus can be finished time saving in comparison to the traditional application with paintbrush and roll.



Paints

Paints and equalising paints

With regard to equalising paints the PFT SAMBA-family also impresses with the innovative processing via airless technology. Ready to use colours are applied nearly mist-free and efficiently on walls and ceilings with the PFT SAMBA airless.



If you want to spray something pneumatically (air assisted), PFT offers the suitable solution with the conveying pumps PFT SWING. As flexible connection to the pasty materials, with and without graining, the conveying pumps of the PFT SWING-family fit entirely in the system.

In addition to paints and equalising paints, various thin-liquid fluids, pumpable and solvent-free materials (in buckets) up to a grain size of 8 mm, depending on the SWING type, can be pumped, pressed and sprayed.



PFT SAMBA-Family

The PFT airless spraying machines process nearly every kind of construction paintings in airless technology. The fields of application include construction paintings, to the point of professional large construction sites in indoor and outdoor areas.



PFT SWING M

The small conveying pump with electronic, continuously adjustable direct drive of 1,5 kW. The PFT SWING M can pump, press and spray thin-liquid fluids, pumpable and solvent-free materials (in buckets) up to a grain size of 3 mm.

230V



PFT SWING L

The universal conveying pump either with fixed or with electronic, continuously adjustable direct drive of 4 kW/230 V or 5,5 kW/400 V. Pre-mixed materials up to a grain size of 8 mm can be processed without difficulty.

Advantages at a glance:

- ▶ fast and rational working
- ▶ machine technique in system
- ▶ in agreement with suppliers
- ▶ flexible system for application both airless and air assisted, alternatively also with inliner paint roller
- ▶ easy handling



Coatings

Thin coatings and filling compounds

Modern machine technology today is a must for professional thin coatings. Firstly it is an enormous relief for your work and secondly it helps you to improve the profitability of your company. In order to achieve high-quality surfaces on walls and ceilings high-quality fillers are applied mechanically in thin layers. (Qualities Q3 and Q4)

Mineral knifing fillers

With the mixing pump PFT RITMO powercoat for the first time it is now possible to work and to spray mineral levelling compounds mechanically. Thanks to the patented agitator system the knifing filler is mixed knot-free and a sprayable knifing filler is produced – a material that so far only could be mixed by hand with a trowel.

Pre-mixed, pasty knifing fillers

The flexibly applicable airless spraying gun is ideal for pasty knifing fillers the PFT SAMBA XL. It is especially adapted to the application to create high-quality surfaces in the qualities Q3 and Q4, which in dry construction can be achieved in no time at all.





PFT RITMO powercoat

The innovation in mixing and spraying technology. Mechanical application of knifing fillers revolutionises interior construction. The mixing pump is equipped with a patented agitator, made of stainless steel/rubber, which, for the first time, makes possible the machine-crushing of lumps. Thereby a homogenous, sprayable thin-wall plaster is produced.

PFT SAMBA XL

The flexibly applicable airless spraying gun for various pasty materials. The material to be processed, e.g. dispersion levelling compound, is suctioned out of the bucket. Via a high-pressure hose assembly and a special pistol the coating is applied on the wall or the ceiling.

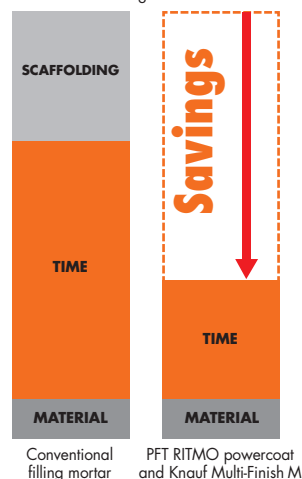
Advantages at a glance:

- ▶ achievement of surface qualities up to Q3 and Q4
- ▶ fast and efficient working
- ▶ patented agitator technology for mineral fillers
- ▶ flexible systems for airless and air-assisted applications
- ▶ suitable solutions for mineral and pasty materials



Efficiency of the system in comparison to hand processing

Example: Full-surface skim coating of a concrete ceiling





Plasters

Finishing plasters and base coats

Plastering today means: to be top-fit with modern PFT technique through work simplification, power and speed. In the PFT programme you can find for every task the economic solution. Save time, power and unnecessary work with PFT.

Thousand times proven mixing pump technology for your construction site. Whether a 230 V application or a 400 V application, whether mineral or pasty material – PFT always has the suitable machine technology.

The proven mixing pumps of PFT process professionally all current finishing and base coats. PFT is the ABSOLUTE reference class for the mechanical plastering technique.





PFT G 4

Powerful, quiet and technically perfect:
The "number one"!

It can be operated out of bags and directly out of the Silo with delivery hood and injection hood respectively and with the pneumatic conveying machine PFT SILOMAT.



PFT RITMO-Family

The compact one-person mixing pump in 230 V alternating current for spraying and applying knifing fillers, levelling compounds, dispersion paints and much more up to a grain size of 2 mm.

The proven mixing pumps will meet your needs directly:

PFT RITMO M – the smallest one-person mixing pump with drive of 1,5 kW.

PFT RITMO L – the small one with powerful drive of 2,2 kW ensures hose lengths of 20 metres

PFT RITMO XL – the new one is available in:

1. three-phase current 400 V, three phases,
2. alternating current 230 V, single-phase,
3. 230 V/400 V switchable



PFT SWING L / PFT HM 24

In the so to say "open system" the horizontal batch mixer PFT HM 24 mixes the plaster and transfers it to the connected conveying pump PFT SWING L, which sprays the plaster via a PFT air compressor pneumatically (air assisted) onto the surface.

Advantages at a glance:

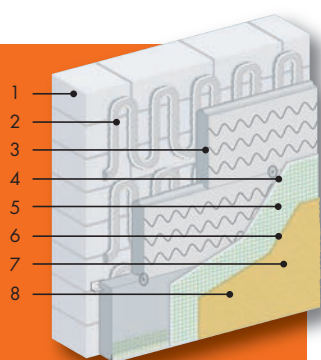
- ▶ fast and efficient working
- ▶ machine technique in the system
- ▶ PFT RITMO XL also available in 230 V/400 V switchable



Insulation

Heat-insulation composite systems

Mechanical bonding, plastering, cutting and reinforcing.
The PFT machine technique helps you when you work with
heat-insulation composite systems in order to simplify,
accelerate and rationalize your workflow.
You will save time, power and money.



1. Subsurface
2. Applying bonding mortar
3. Cutting insulation boards
4. Applying reinforcement adhesive
5. Embed reinforcement mesh
6. Applying finishing
7. Applying base coat
8. Applying equalising paints





PFT CUTMASTER / PFT MINICUT

The hot wire for efficient processing of heat-insulation boards. Up to a thickness of 350 mm maximum you can cut insulation boards easily, quickly and exactly according to the desired thickness. Also possible in portrait format up to 1.150 mm maximum.



PFT G 4

Powerful, quiet and technically perfect:
It is the "number 1"!
It can be operated both, out of bags or directly out of the Silo with delivery or injection hood and pneumatic conveying system PFT SILOMAT.



PFT RITMO-Family

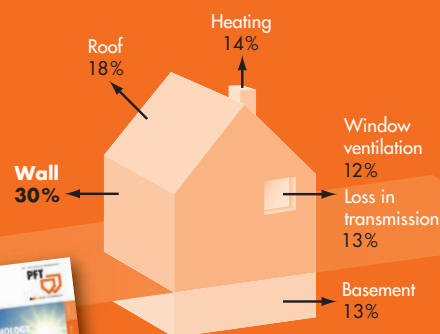
The compact one-person mixing pump with 230 V alternating current for spraying and applying spray coats, leveling compounds, dispersion paints and much more.
In XL version also available in 400 V, 230 V or 230 V/400 V switchable.



Advantages at a glance:

- ▶ saving of 25 % in comparison to manual operation and therefore cost-saving
- ▶ easy processing of materials and therefore power saving

Due to exterior walls without insulation approximately one third of heat is lost. To put it positively:
Up to 30% of the heating energy can be saved solely by good exterior insulation. No other individual measure has this kind of potential!



You want to get to know more about the heat-insulation composite systems processing? Then just order our special brochure
PFT MACHINE TECHNIQUE FOR HEAT-INSULATION COMPOSITE SYSTEMS



All rights and technical changes reserved. Our warranty covers only the perfect condition of our machines. Consumption, performance indications and design related information are based on experiences which cannot be transferred to cases with different circumstances. Further the directives of the material manufacturer are valid. Changes, reprint and photomechanical reproduction, even in excerpts, require the approval of Knauf PFT GmbH & Co. KG.

PFT MuS – GB/1M/11.11/FLY

**Knauf PFT**

Technical Hotline:

▶ +49 9323 31-1818

▶ Phone +49 9323 31-760

▶ Fax +49 9323 31-770

▶ info@pft-iphofen.de

▶ www.pft.eu

Customer focus, technical competence and service orientation.

This is what PFT stands for sales and service centers, also within the next couple of decades.

In this table you can find the optimal material/machine combination. For further information please request the individual brochures of the machines.

Varnish and dispersions**Equalising paints****Thin coatings and filling compounds****Mineral knifing fillers****Finishing plasters and base coats****Heat-insulation composite systems**

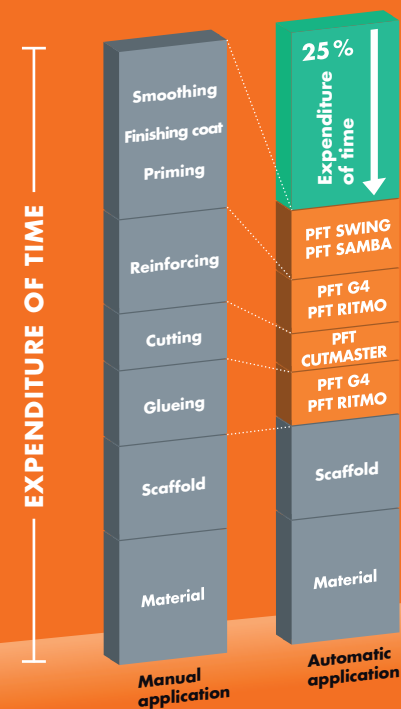
Cutting insulation boards

Bonding mortar

Reinforcement mortar

Base coats

	PFT SAMBA S	PFT SAMBA L	PFT SAMBA XL	PFT RITMO powercoat	PFT RITMO M / L	PFT RITMO XL	PFT G 4	PFT HM 24 / SWING L	PFT SWING M	PFT CUTMASTER
Varnish and dispersions	●	●	●							
Equalising paints		●	●							
Thin coatings and filling compounds			●		●	●			●	
Mineral knifing fillers				●						
Finishing plasters and base coats					●	●	●	●		
Cutting insulation boards										●
Bonding mortar					●	●	●	●		
Reinforcement mortar					●	●	●	●		
Base coats					●	●	●	●	●	

Efficiency when working with heat-insulation composite systems

Knauf PFT GmbH & Co. KG
P. O. Box 60
97343 Iphofen
Einersheimer Straße 53
97346 Iphofen
Germany

Knauf Gips
Dry construction- and Soil-Systems

Knauf AMF
Ceiling Systems

Knauf Bauprodukte
Pro Solutions at Home

Knauf Gips / Marmorit
Plaster and Facade Systems

Knauf Dämmstoffe
Polystyrol Insulating Material

Marbos
Mortar Systems in Civil Engineering

Knauf Insulation
Insulating Material: Rock Wool,
Glass Wool and Wood Wool

Knauf Integral
Gypsum Fibre Technology
for Soil, Wall and Ceiling

Knauf Perlite
AQUAPANEL® Cement Boards,
Perlit

Sakret Bausysteme
Dry Mortar for
New Build and Renovation