

kNAUF *riessler*

PERFECT SURFACES. HIGH PERFORMANCE.

VINOVA

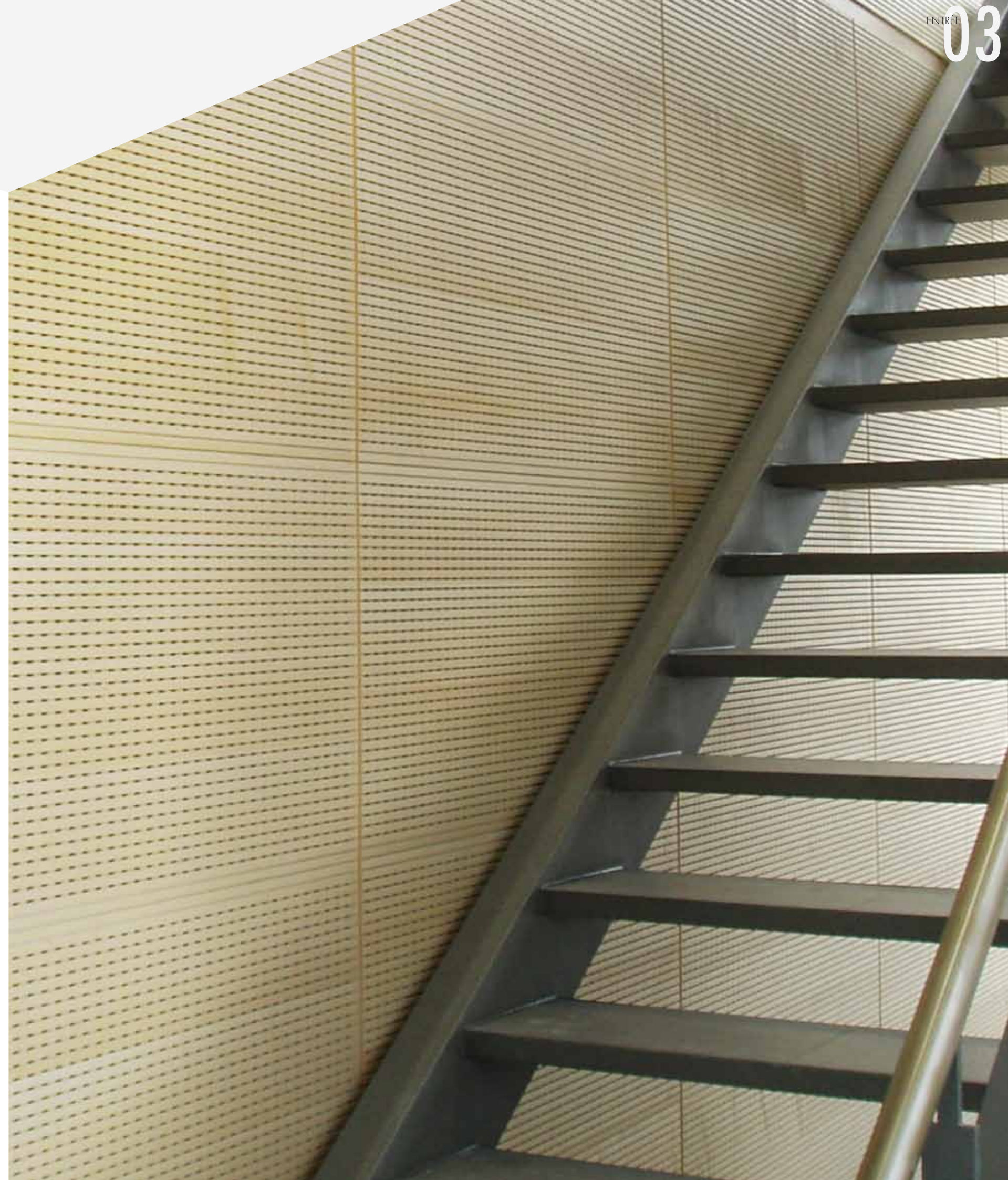


SURFACES AND SYSTEMS –

CHARACTERISTICS OF KNAUF. WELCOME TO KNAUF RIESSLER.

Good prospects for architects and planners: The **VINOVA** system for walls and ceilings provide complete design freedom – and at the same time offers superb function and safety characteristics.

Whenever high conceptional requirements meet strict technical demands, **VINOVA** is the top choice. Numerous case study projects show the wide variety of possibilities – and inspire further creative solutions.





GREAT WHEN THE MOST **CREATIVE** SOLUTIONS
ARE ALSO THE MOST **FUNCTIONAL**.

Create features: Whether coated, painted or laminated, with real wood veneer or digital print, the **VINOVApanel** gypsum fibre elements open new up creative scope – flexible in form, surface and structure.
At the same time they impress with technical performances:



Fire protection class A2-s1, d0
classified and therefore in the
category:
Non-combustible materials



Lacquer, surface structuring
or coating – any finishing is
possible



High stability with a high
impact resistance



Optionally also available
a magnetically effective
surface



Best suited to improving the
room acoustics

HIGH ACOUSTIC PERFORMANCE

ACHIEVED.

Russia's most modern paediatric clinic in Moscow was planned to open on the International Children's Day. This project deadline required absolute time efficiency in design and installation

The complete substructure was first erected on site, with the **VINOVA-panels** installed in an „acoustic sail“ formation during the fit-out phase of the scheme.
Result: Schedule fully met.



PROJECT:
ARCHITECT:
PRODUCT:

REQUIREMENTS:

Paediatric clinic, Moscow
Bettina Könen
Acoustic wall panels for all auditoriums,
HPL coated, acoustic ceiling for sound
reflection
Acoustics and design

REFERENCE

EXTERIOR AUDACITY. INTERIOR CONSISTENCY.

Bold design comes alive through its consistency in style within interior finishes. With **VINOVA** walls and ceilings surpass their structural function to become powerful character and function design elements. An example of this is the Swedbank building in Lithuania, a veritable "landmark building" for the Baltic republic.

The task here was not only to meet manifold functional requirements – retention of escape routes, integration of ventilation elements, observance of the latest EU standards, to name just a few keywords - but also to fulfil great expectations in the surface design. To achieve this, a veneer of Canadian Garry oak was applied to the **VINOVA**panels.

Knauf Riessler also provided advisory services in the implementation and thus supported smooth completion of this large-scale project.
Result: Interior and exterior effects formed a convincing harmony!



PROJECT:
ARCHITECT:
PRODUCT:

REQUIREMENTS:

Swedbank Litauen
Audrius Ambrasas
Approx. 3,500 m² of ceiling
and wall panels with real
Garry oak veneer
Non-combustible (A2), design

REFERENCE



Nordic clarity and high functionality: **VINOVA**panel realized in Lithuania.



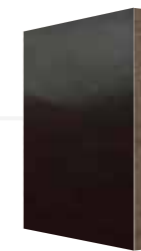


BRILLIANT SOLUTION.



Elegant shell, robust core: The panelling of the boutiques in the Zurich Airport formed an interesting challenge for the Knauf Riessler surface experts. After some experiments a

multi-layered special paint coating produced the solution: A noble lustrous shell that fulfilled the strict safety requirements at the same time. **Result:** Breathtaking glow.



PROJECT:
ARCHITECT:

PRODUCT:

REQUIREMENTS:

Zurich Airport
Bosshard Architektur
Baumanagement GmbH
VINOVApanel gypsum fibre
HPL coated and lacquered
Shiny robust surface



REFERENCE

SOMETIMES THE ART
IS NOT ON THE WALLS.
BUT **THE WALL ITSELF.**



The spectacular wave shape of the Willkie Farr & Gallagher building in Frankfurt was a sensation – and was to be continued in the interior, under observance of all structural requirements and non-combustibil-

ity. In order to achieve the optical effect, the elements were milled in waves and RAL-coated. **Result:** A "one-mould solution"!



PROJECT:

Willkie Farr & Gallagher
"Die Welle", Frankfurt

ARCHITECT:

Just / Burgeff Architekten GmbH

PRODUCT:

Gypsum fibre RAL-coated,
lacquered, wave wall

REQUIREMENTS:

Design, non-combustible (A2)
and acoustics



REFERENCE



TOUGH PERFORMER.



Robustness and impact performance are paramount in sports venues. These performances are met by the **VINOVA** baffle wall system.

If, as in Wolpertshausen, the hall is also used for meetings, further acoustical and fire protection requirements also have to be fulfilled. **Result: VINOVA wins.**



PROJECT: Sports hall, Wolpertshausen
 ARCHITECT: Architekturbüro Klenk
 PRODUCT: **VINOVApanel** gypsum fibre, real beech veneer
 REQUIREMENTS: Acoustical bulging wall, non-combustible (A2)



REFERENCE

WHEN ROOM IS NOT THE ONLY FACTOR.
BUT **ATMOSPHERE** AS WELL.

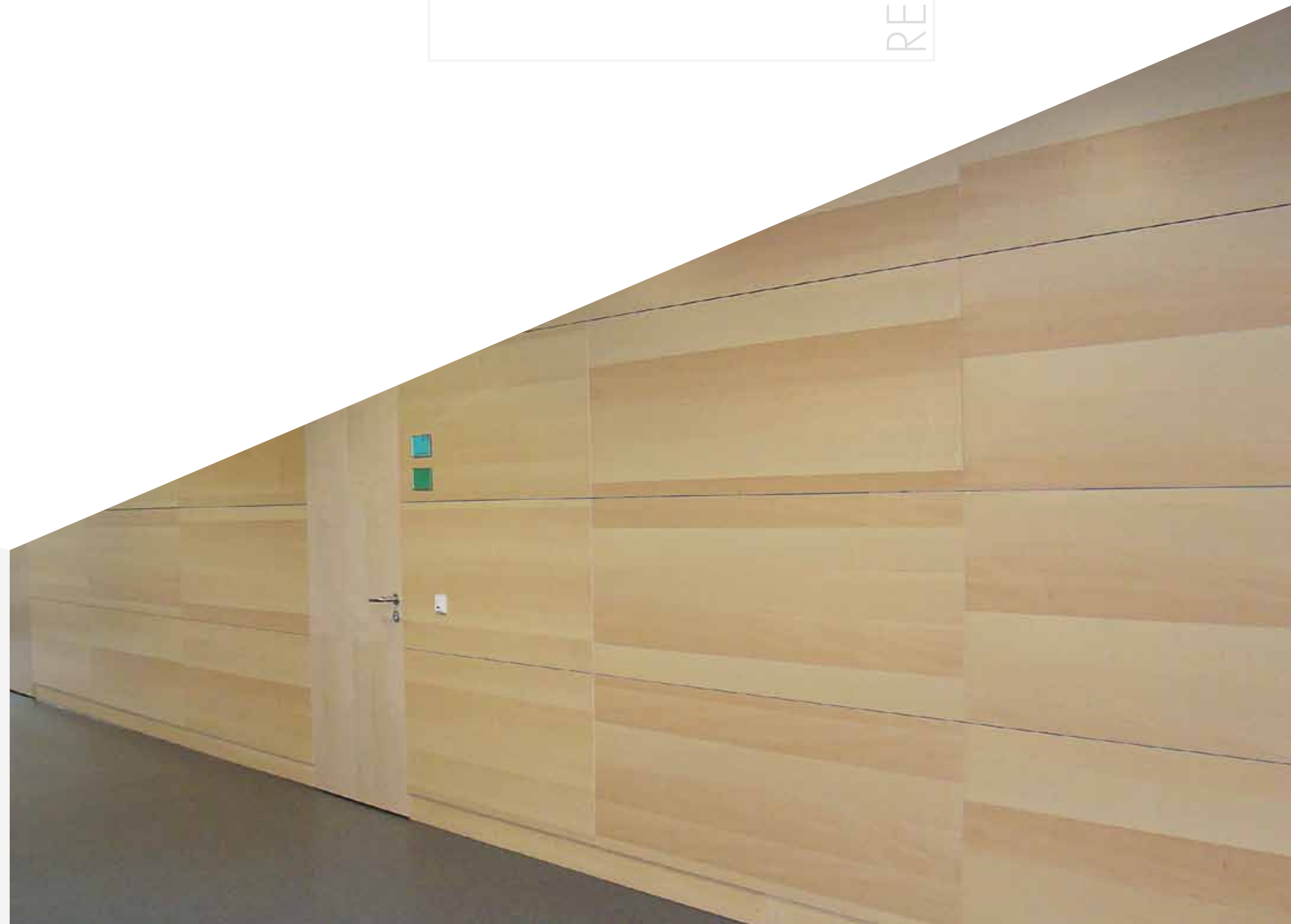
When designing the ultra-modern vocational school centre in Munich the planners made use of the unique aura of the rare European maple. About 4,500 m² of **VINOVApanel** gypsum fibre elements were veneered with it. Knauf

Riessler was pleased to help in procuring this special timber. And also provided the mounting system during the implementation on site.
Result: A building which one can learn in and from.



PROJECT: Vocation school centre in Munich
ARCHITECT: SPP Architekten (Sturm, Peter+Peter)
PRODUCT: 4,500 m² of veneered A2 wall panelling and mounting system
REQUIREMENTS: Non-combustible (A2)

REFERENCE





MASTER OF ALL CLASSES IN FIRE PROTECTION.

Safety documentation and certification.

Be on the safe side of fire protection with **VINOVApanel**. The elements achieve the building material class A2 – “non combustible” in combination with real wood, veneer, CPL and digital prints. Optimal qualifications for use in sensitive areas: Hospitals, schools, airports, etc.

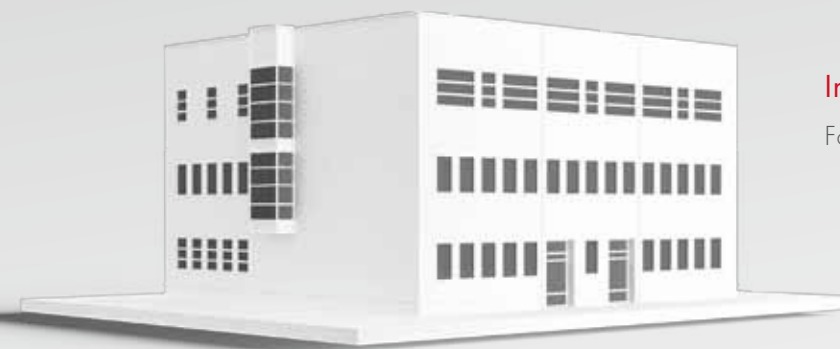
The most important facts at a glance:

- ⊕ Requirements of the assembly area ordinances are fulfilled
- ⊕ Classification A2-s1, d0 tested in combination
- ⊕ Variable surface design and still non-combustible
- ⊕ Certified building-biological harmlessness of the carrier material gypsum fibre
- ⊕ Qualified **VINOVA** systems



**Trade**

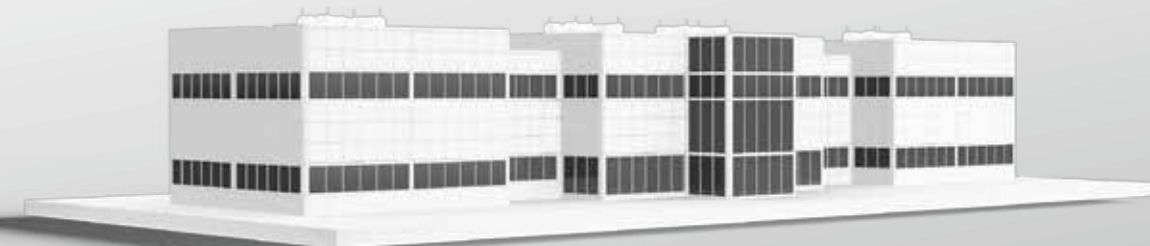
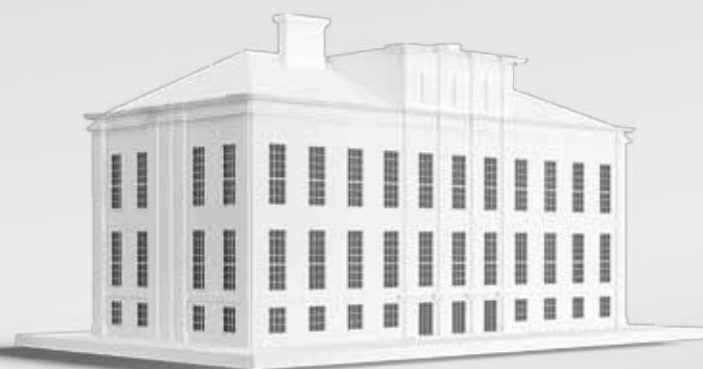
For example shopping centres

**Industry**

For example office blocks

Education

For example universities, schools

**Public buildings**

For example airports or hospitals

**Leisure**

For example sports halls



An abundance of different regulations have to be observed and standards fulfilled for each building type in accordance with the relevant applicable regulations.

With **VINOVA** architects and planners have peace of mind in product performance, and enjoy design freedom with a highly flexible system.

WHATEVER YOU ARE PLANNING.

VINOVA FROM KNAUF RIESSLER.

1 000 POSSIBILITIES, ONE SYSTEM.

Solid basis.

The secret behind **VINOVApanel** is the gypsum fibre technology.

The special recipe in combination with a unique production process result in a thoroughly convincing material: Enormously stable, economical, sustainable. In addition building-biologically harmless. Proven by the project case studies to be highly flexible and formable in design.

Manifold finishes.

With coated elements. Real wood veneer or lacquered. Semi-matt or glossy. Or even with a digital print?

It may not sound spectacular, but it opens fascinating possibilities for shaping visions and making space come alive. With almost complete freedom with regard to thickness, dimension, form, surface and structure. For new and surprising solutions.

Unbeatable in building.

What's the use of the most convincing surface design if it cannot be realized economically, safely and reliably? Which is where the advantages of **VINOVA** systems is proven in application and design.

- ⊕ Dry, time-saving mounting and stable fastening through the **VINOVA** substructure
- ⊕ Installation lines can be integrated neatly
- ⊕ Flexible accesses for rapid, inexpensive maintenance and repair
- ⊕ High degree of prefabrication ensures rapid building progress

VINOVAPANEL

BOARD THICKNESS: 12–25 mm

FORMAT: Max. 3000 x 600 mm

BULK DENSITY: 1100 kg/m³ or 1500 kg/m³
edge trimmed

COATING: CPL, HPL, veneer, lacquer, digital print



Bent elements

We shape the desired surfaces. For example like this ...



... or completely differently.



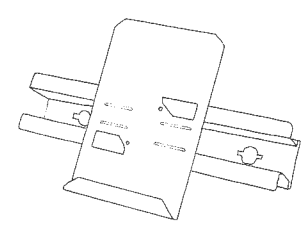
Room
for
ideas

THE REALLY GOOD IDEAS ARE ALWAYS SIMPLE.

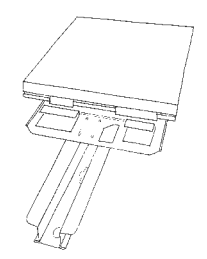
The tried and proven **VINOVA** substructure allows planned, rapid mounting in agreement with all defined requirements. Particular advantage: Erection of the substructure and mounting of the **VINOVA-panels** can be carried out in two steps.

The **VINOVA** mounting system is available for use as a furring system or a suspended ceiling. It consists of metal rails and different clip fasteners.

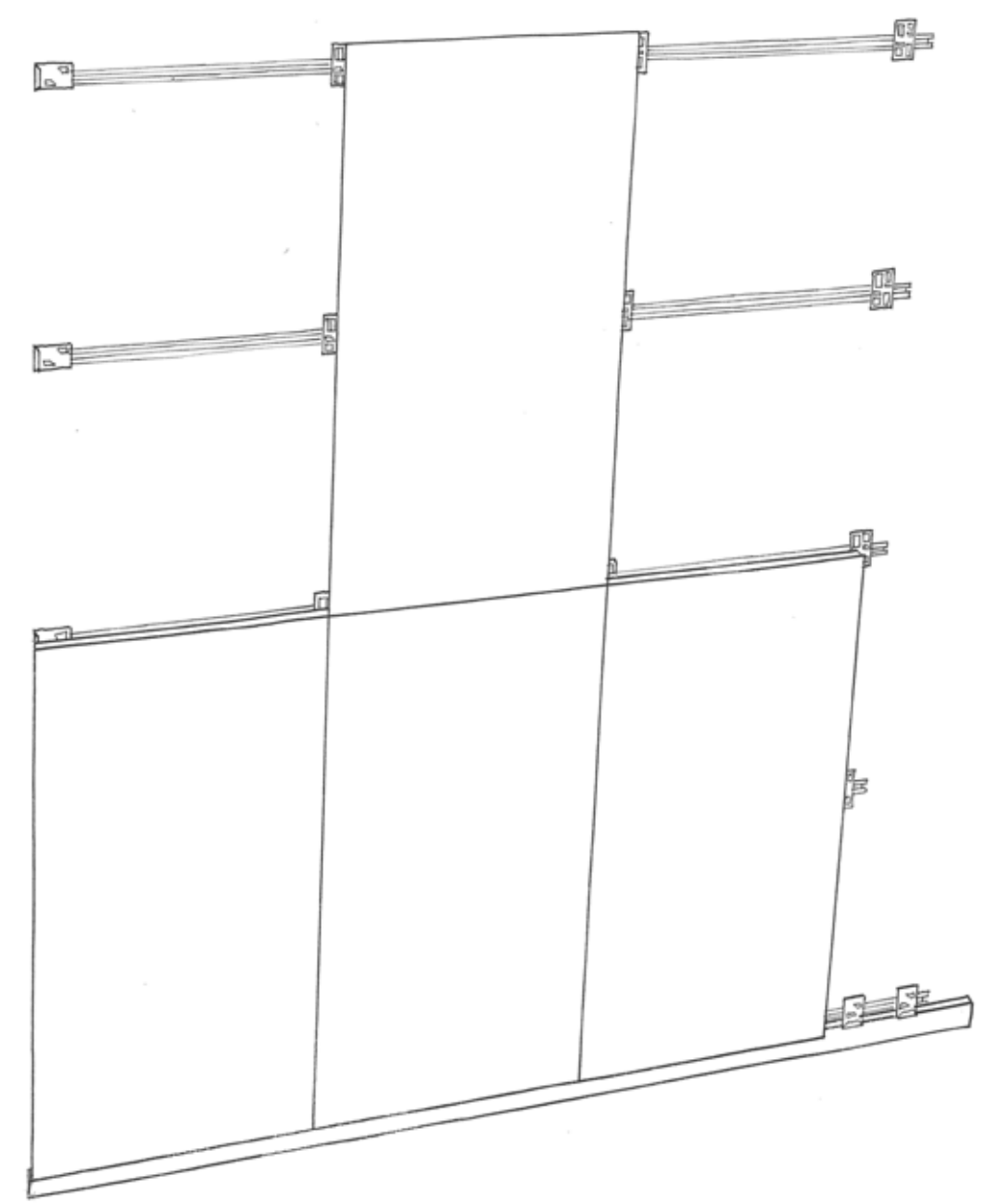
A separate baffle wall system is available for sports venues.



The simple basic principle of the **VINOVA** substructure



VINOVA substructure with **VINOVA** panel



Letting creative ideas take shape rapidly

The elements of the VINOVA substructure



Nonius hangers



Metal rails



Clip fasteners



STRONG SYSTEM. STRONG SERVICE.

Knauf Riessler is your partner in planning and realizing demanding projects. From the very beginning, we assume responsibility for our tested and certified products, and for ensuring that the bespoke project requirements are met.

Our services – around the product

- ⊕ Project-specific solutions
- ⊕ Acoustic functions for every surface
- ⊕ Different raw materials can be used
- ⊕ Individual surface finish
- ⊕ Made-to-measure as required

Our services – around the project

- ⊕ Complete project assistance and project support
- ⊕ Support in conceptional implementation of the planning
- ⊕ Site installation guidance and instruction
- ⊕ Responsible project manager defined for each object
- ⊕ Project instructor on site



Knauf Academy

Experienced experts impart fundamental knowledge and special know-how across Germany – from ceiling design through statics up to indoor climate or fire and noise protection. The chambers of architects award education credits for course participation.

www.knauf-akademie.de



Knauf Direkt

Techn. Information Service:

Phone: 09001 31-1000* Drywall and Floor Systems

Fax: 01805 31-4000**

www.knauf-riessler.de

Knauf Riessler

Süßwiesenstraße 10
74549 Wolpertshausen
Germany
Phone: +49 7904 944681-0
Fax: +49 7904 944681-10

Knauf AMF

Ceiling systems

Knauf Bauprodukte

Professional solutions for homes

Knauf Dämmstoffe

Insulation materials made of
polystyrene rigid foam

Knauf Gips

Drywall systems
Plaster and Facade Systems
Floor Systems

Knauf Insulation

Insulation materials made of mineral
wool, glass wool and wood wool

Knauf Integral

Gypsum fibre technology for floor,
wall and ceiling

Knauf Perlite

AQUAPANEL® Cement Boards, Perlite

Knauf PFT

Machine technology and
plant construction

Marbos

Mortar systems for plaster ceilings
in civil engineering

Sakret Bausysteme

Dry mortar for new buildings
and renovation

All technical changes reserved. Only the current printed instructions are valid. Our warranty is expressly limited to our products in flawless condition. The constructional and structural properties, and characteristic building physics of Knauf systems can solely be ensured with the exclusive use of Knauf system components, or other products expressly recommended by Knauf. All application quantities and delivery amounts are based on empirical data that are not easily transferable to other deviating areas. All rights reserved. All amendments, reprints and photocopies, including those of excerpts, require the express permission of Knauf Gips KG, Am Bahnhof 7, 97346 Iphofen, Germany.

* A rate of 0.39 € per minute will be charged for calls from within the German landline network. Callers whose phone numbers are not registered in the address database at Knauf Gips KG, i.e. private builders or non-patrons, will be charged a rate of 1.69 € per minute. Calls from mobile phones will be charged 1.48 € per minute.

** 0.14 € per minute