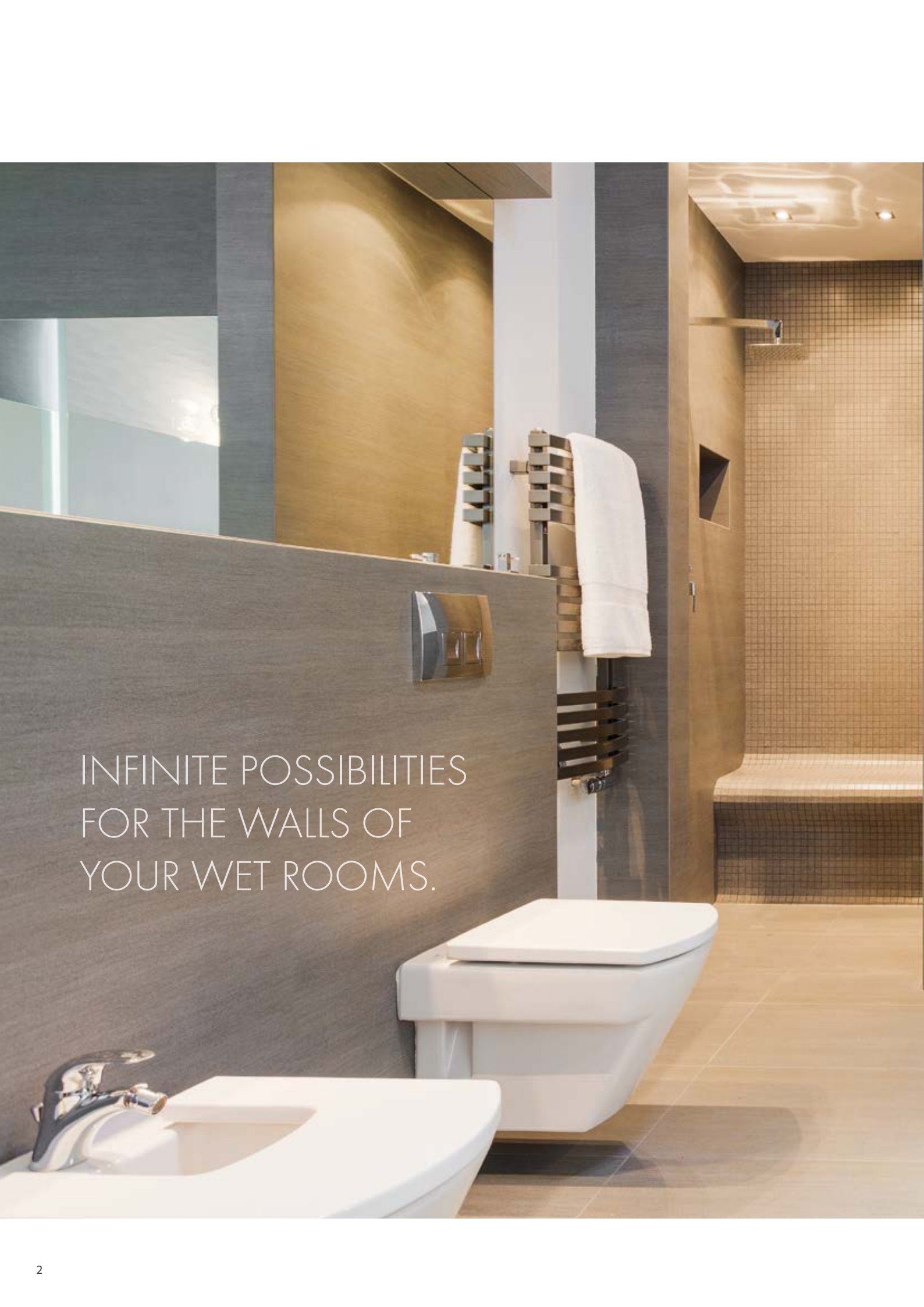


KNAUF WATERLINE

WET ROOM SYSTEM



A modern bathroom interior featuring a white toilet and a white sink with a chrome faucet. The walls are a mix of dark grey and light beige panels. A large mirror is mounted on the wall above the sink. A towel rack with a white towel is visible. In the background, a shower area with a glass door and a tiled bench is visible. The floor is made of large, light-colored tiles.

INFINITE POSSIBILITIES
FOR THE WALLS OF
YOUR WET ROOMS.



Surface expertise

KNAUF DESIGN stands for ground-breaking and creative ideas for finishing surfaces of the most diverse materials.

The results are highly design-oriented room concepts. They prove themselves wherever continuity of appearance and system safety are required.

As a partner for planners, architects, the trade, fabricators and the industry as well as a reliable system supplier, we offer maximum security and confidence in terms of approval, quality and feasibility.

Design. Function. Quality. Freedom.



CONTENT

› Product description	04
› Properties	05
› Advantages	06
› Profile system	07
› Wall structure	08
› Installation process	09
› Design decors	10



WATERLINE OFFERS RELIABLE SOLUTIONS FOR WET AREAS: WATERPROOF, JOINTLESS AND EASY TO CLEAN.

The **DESIGNBOARD 3 10 CREATIVE** is a lightweight, thin yet robust board. It forms the basis for the WATERLINE system and is suitable for installation in and renovation of damp rooms and sanitary facilities. What is more, the surface with a designer coating on one side is

highly resistant. The connection system provided on the long sides enables a joint-free look to be achieved.

Fast installation and conversion, low build-up heights and individual designs create an ent-

irely new range of possibilities. Design concepts can be implemented consistently for all room functions even in wet areas.

Panel structure

The aluminium composite panel consists of a black polyethylene core coated on both sides with approx. 0.3 mm thick aluminium panels. The material is very dimensionally stable and flat due to the sandwich technology.



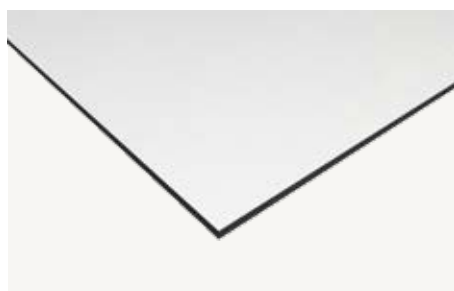
8. Multi-layered surface sealing
7. Decorative layer
6. Primer layer
5. Stabilising base covering layer
4. PE core
3. Stabilising base covering layer
2. Primer layer
1. Surface sealing



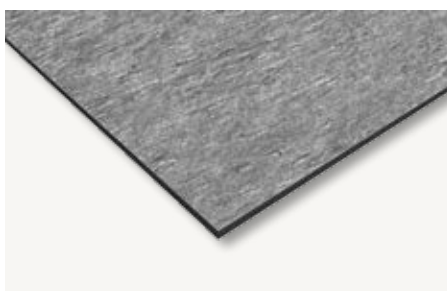
PROPERTIES

DESIGNBOARD 310 CREATIVE

Backing material	Aluminium composite panel; core: Polyethylene
Thickness	3 mm
Weight	3.8 kg/m ²
Standard formats (raw format obtuse-edged)	2500 x 1250 mm 3050 x 1250 mm
Standard formats (longitudinal Königsfuge joint)	2480 x 1230 mm 3030 x 1230 mm
Fields of application	Damp and wet rooms, laundries, kitchen rear walls, rooms with increased humidity



Plain colours



KD-0031-00-C Pizarro Argentó



Individual design decor on request

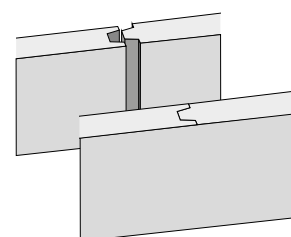
ELEGANT APPEARANCE AND QUICK INSTALLATION.



- › Ideally suited for fast renovations by laying on top of old tiles
- › Simple working with usual power tools
- › Large-sized panels guarantee fast working



- › Easy to clean
- › Low structural height
- › Individual design possible
- › Königsfuge joint for a jointless appearance
- › Seamless formation of inner and outer corners up to 90°



Königsfuge joint



- › Water-repellent material
- › Resistant surface
- › Chemically resistant
- › Scratch and abrasion resistant
- › Outstanding interior room air quality
- › Versatile use



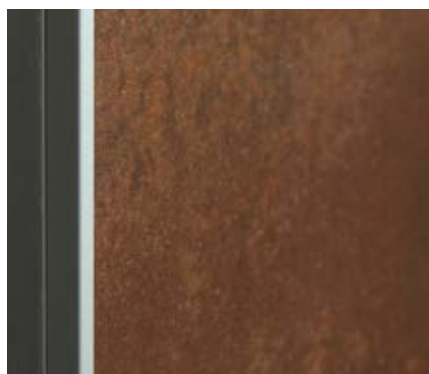
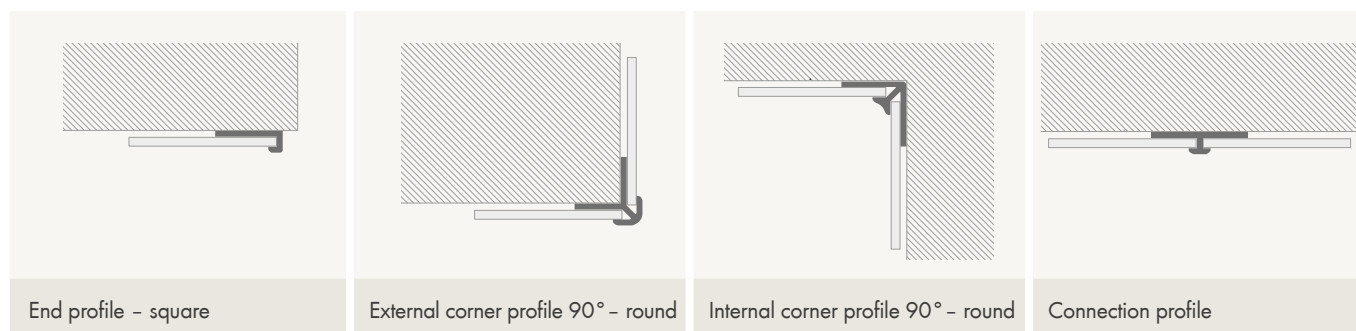
- › Low inherent weight – lighter than tiles or natural stone
- › Thin and dimensionally stable material



ALUMINIUM PROFILES OFFER CONCEALED EDGE PROTECTION.

We offer anodised aluminium end profiles (length 3000 mm) as impact protection and for laminating the outer cut edges. External and internal corner profiles as well as connecting profiles are also available for the panel joint.

Profile system



The end profile conceals the external cut edge.



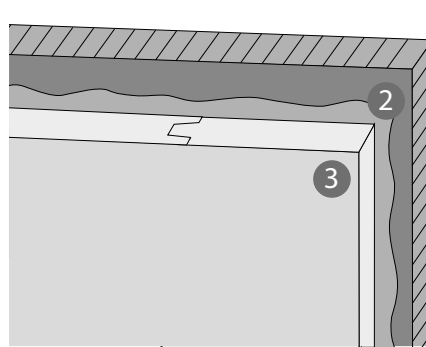
Seamless corner formation up to 90°.

Design decor Oxidian Metal Walnut (KD-0033-08-C) with Königsfuge joint.

IDEAL FOR GLUED WALL COVERINGS.

Wall structure

The decorative DESIGNBOARD 310 CREATIVE glued to the existing wall offers an effective and quick solution for creating a unique appearance on old tiled coverings or drywall constructions. The substrate must be sufficiently load-bearing, level and dry.



1. Existing wall with sealing layer
2. Knauf sanitary silicone*
3. DESIGNBOARD 310 CREATIVE

* Wall spacing: 0 – 10 mm. Other wall spacings from 10 – 40 mm and full-surface glueing using Knauf flexible adhesive possible. The sealing level must be ensured.

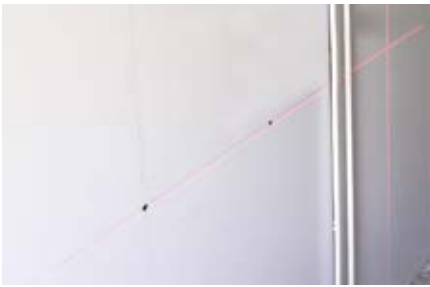
Cleaning

The surface is only allowed to be cleaned with water containing alkaline detergent additives (e.g. washing-up liquid). Avoid the use of solvents, alcohol or scouring products. We recommend rinsing with clear water.



INSTALLATION PROCESS USING SILICONE AND ADHESIVE TAPE.

The panels can be processed quickly and easily with conventional woodworking and metalworking machines. The general processing guidelines for aluminium composite panels apply.



Measure dimensions

Measurement of the construction dimensions required for panel processing (use of a line laser)



Transfer dimensions

Drawing of dimensions and drilling points on the back of the panel



Cut panels to size

Cutting to size with a standard hand-held circular saw (using a guide bar and a fine-toothed carbide saw blade)



Process edges

Burr removal after cutting with fine sandpaper or a file



Fixation with adhesive tape

Initial adhesion by means of double-sided adhesive tape



Apply Knauf Sanitary Silicone

Application of silicone with a vulcanization time of 1 - 2 mm/day



Install panels

Panel installation by pressing on (internal and external corners up to 90° can be bent with the aid of V-joints)



Final installation

After sealing with silicone and curing, the room can be used

Further information

Detailed installation instructions can be found in our technical brochure (Tro180.de).



KD-0033-01-C Oxidian Metal Anthracite



KD-0021-00-C Mesh



KD-0033-08-C Oxidian Metal Walnut



KD-0069-00-C Triborg Oak

DESIGN DECORS

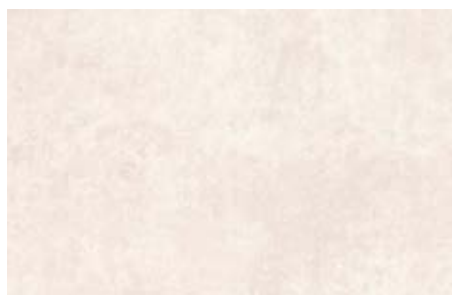
Real feel-good oases

With our Knauf innovations, moist and wet rooms are not only optimally protected, they can also be given a stylish level of design. Individual decor and design variants enable the rooms to be turned into feel-good oases. Create

unique identities through graphic highlights in interior design. Graphics, photography, recreated genuine materials – this is how individuality can be given space.



KD-0001-00-C Limestone



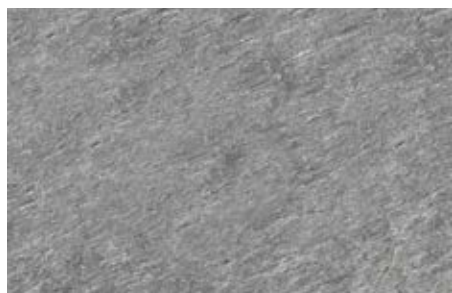
KD-0033-06-C Oxidian Metal White



KD-0070-01-C French Lattice White



KD-0002-00-C Concrete Pure



KD-0031-00-C Pizarro Argent



KD-0084-00-C Concrete Soft



KD-0085-00-C Tweedy Oak



KD-0113-00-C Tadelakt Turquoise



Individual design decor on request



KNAUF DESIGN
KNAUF riessler GmbH & Co. KG
Süßwiesenstraße 10
74549 Wolpertshausen

Telefon: +49 7904 944681-0
Telefax: +49 7904 944681-10

info@knauf-design.com
www.knauf-design.com

Subject to technical modifications. The latest edition applies in each case. Our warranty only covers correct composition of our material. The design, structure engineering and physical properties of Knauf systems can only be achieved if exclusively Knauf system components or products expressly recommended by Knauf are used. Information about consumption, quantities and versions are based on experience, and are not applicable directly to other situations if the conditions are different. The information contained is based on our current state of the art. However, it cannot contain the complete status of generally recognised rules of building technology, relevant standards, guidelines and trade rules. These must be complied with by the persons carrying out the work, along with the processing requirements. All rights reserved. No modifications, reprinting and reproduction either photomechanically or by electronic means, in whole or in part, without the express approval from KNAUF riessler GmbH & Co. KG Süßwiesenstraße 10, 74549 Wolpertshausen. Our general terms and conditions of business, delivery and payment (GT&Cs) apply.

Knauf riessler GmbH & Co. KG
Süßwiesenstraße 10
74549 Wolpertshausen

Knauf AMF
Ceiling systems

Knauf Aquapanel
TecTem® interior insulation
Bulk insulation fills

Knauf Bauprodukte
Professional solutions for the home

Knauf Design
Surface expertise

Knauf Gips
Dry wall systems
Floor systems
Plaster and façade systems

Knauf Insulation
Insulation systems for redevelopment and new buildings

Knauf Integral
Gypsum fibre technology for floors, walls and ceilings

Knauf PFT
Mechanical engineering and plant construction

Marbos
Mortar systems for paved surfaces in civil engineering

Sakret Bausysteme
Dry mortar for new builds and redevelopment